

CASE REPORT

Bronchial Artery Arising from the Left Vertebral Artery: Case Report and Review of the Literature

Timothy J. Amrhein, Charles Kim, Tony P. Smith, L. Washington

Department of Radiology, Duke University Medical Center, Box 3808 DUMC, Durham, NC

Address for correspondence:

Dr. Timothy J. Amrhein,
Department of Radiology,
Duke University Medical Center,
Box 3808 DUMC, Durham, NC 27710.
E-mail: timothy.amrhein@duke.edu



Received : 03-12-2011

Accepted : 14-12-2011

Published : 24-12-2011

ABSTRACT

Knowledge of bronchial artery anatomy, including the possible locations of anomalous origin, is essential for complete catheter directed embolization for massive hemoptysis. Undetected anomalous bronchial arteries can be a source of failed bronchial artery embolization. We report a case of a common trunk bronchial artery arising from the left vertebral artery and review standard and variant bronchial artery anatomy.

Key words: Anomalous, aberrant, bronchial artery, CT angiography, embolization

INTRODUCTION

The bronchial arterial circulation is the source of bleeding in nearly 90% of cases of massive hemoptysis.^[1] Bronchial artery embolization (BAE) has become an established procedure for the treatment of massive hemoptysis with proven efficacy and safety.^[1] A thorough knowledge of bronchial artery anatomy, including the possible

locations of anomalous origin, is an integral component of a successful procedure. The anatomy of the bronchial arteries has been previously reported in considerable detail, outlining variations in origin, course, and branching pattern.^[2] We report a case of a common trunk bronchial artery arising from the left vertebral artery and review standard and variant bronchial artery anatomy relevant to complete evaluation of the bronchial arterial supply.

CASE REPORT

An 89-year-old female with a past medical history of hypertension and chronic obstructive pulmonary disease presented to the emergency department with new onset of dizziness and gait instability that had been progressive over the prior 7 months. She was admitted

| Access this article online | |
|---|---|
| Quick Response Code: | Website: www.clinicalimaging-science.org |
|  | DOI: 10.4103/2156-7514.91135 |

Copyright: © 2011 Amrhein TJ. This is an open-access article distributed under the terms of the Creative Commons Attribution License, which permits unrestricted use, distribution, and reproduction in any medium, provided the original author and source are credited.

This article may be cited as:
Amrhein TJ, Kim C, Smith TP, Washington L. Bronchial Artery Arising from the Left Vertebral Artery: Case Report and Review of the Literature. J Clin Imaging Sci 2011;1:62.
Available FREE in open access from: <http://www.clinicalimaging-science.org/text.asp?2011/1/1/62/91135>

to the Neurology service, and during her evaluation for these complaints, she developed symptoms of shortness of breath, tachycardia, and chest fullness. Computed tomographic pulmonary angiography (CTA) was performed for evaluation of pulmonary embolism using a 16-detector scanner (Lightspeed 16, GE Medical Systems, Milwaukee, WI). Images through the thorax were acquired at 1.25 mm collimation (120 kVp, 441 mA, pitch 1.375:1, rotation time 0.8s) after bolus tracking at the main pulmonary artery during the administration of 100 mL of iopamidol nonionic contrast media (Isovue 370, Bracco Diagnostics Inc.) at 5 mL/s. While pulmonary embolism was not present, incidental finding was made of an anomalous bronchial artery arising from the proximal aspect of a left vertebral artery originating from the aortic arch between the left common carotid and left subclavian arteries [Figures 1 a-c]. This single bronchial artery arose from the right posterior aspect of the left vertebral artery approximately 1.5 cm distal to the aortic arch. The bronchial artery coursed along the left aspect of the trachea prior to bifurcating into right and left bronchial arteries approximately 1 cm above the carina. Single bronchial arteries then coursed along the

bilateral mainstem bronchi until subdividing into smaller tributary branches distally. No additional bronchial arteries were identified despite meticulous review of the source axial, reconstructed multiplanar, and 3D volume rendered images [Figure 2a-c].

Secondary to this finding the possibility of steal phenomena was explored via transcranial Doppler evaluation, which was negative. An etiology for the patient's neurological symptoms was not identified and the patient was discharged and advised outpatient physical and occupational therapy.

DISCUSSION

Numerous earlier investigations have evaluated the anatomy of the bronchial arteries describing variation in their origin, branching patterns and course. The bronchial arteries most commonly arise from the descending thoracic aorta between the lower margin of the T4 vertebral body and the upper margin of the T6 vertebral body (70 – 83%).^[3] Bronchial arteries with an origin outside of this region are considered anomalous. The reported incidence of anomalous bronchial arteries varies widely,

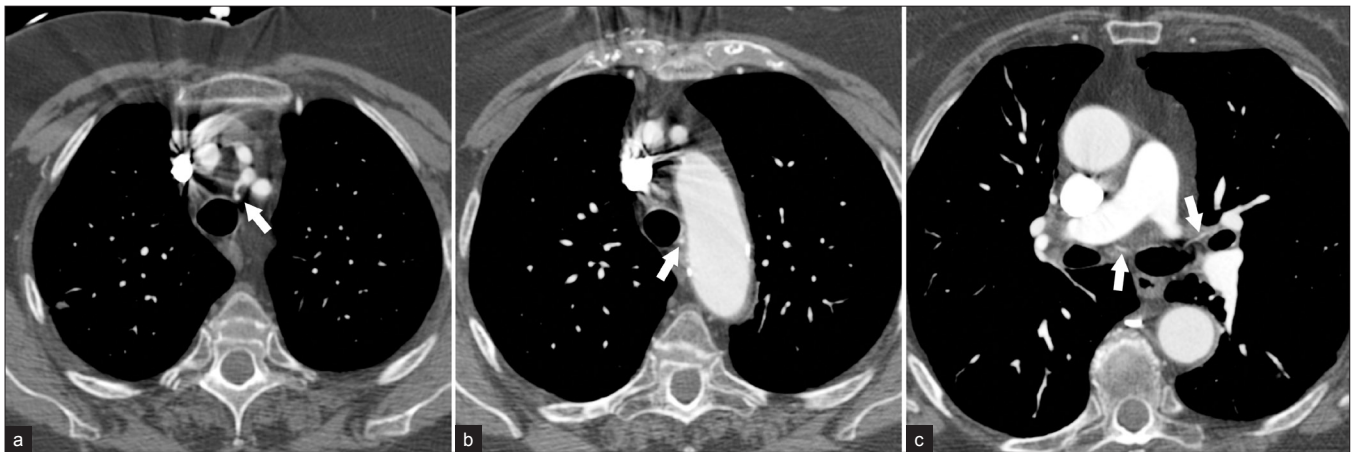


Figure 1: Contrast-enhanced axial CT images of the chest. (a) A common trunk anomalous bronchial artery arises from the left vertebral artery. (b) This bronchial artery courses inferiorly along the trachea. (c) Bifurcation of the bronchial artery into left and right branches, which supply the respective lungs.



Figure 2: (a) Curved multiplanar reconstruction demonstrates the course of the bronchial artery within the mediastinum. (b) 3D volume rendered image demonstrates origin of the bronchial artery from the left vertebral artery (The right brachiocephalic artery has been excluded). (c) Note the close approximation of the bronchial artery with the adjacent tracheobronchial tree. [LSCA: Left subclavian artery; LCCA: Left common carotid artery; L Vertebral Art: left vertebral artery; RBCA: Right brachiocephalic artery]

ranging from 8.3 to 35%.^[1] In 1948, Caudwell et al reported their anatomical findings after dissection of 150 human cadavers.^[2] This landmark study revealed 25 anomalous bronchial arteries (16.7%), 22 arising directly from the aortic arch (14.7%), 1 from the right subclavian artery, and 2 from the left subclavian artery. A review of the literature demonstrates general agreement with these initial findings, with an anomalous origin from the aortic arch being most common and an origin from the subclavian arteries second most common. Since Caudwell et al's initial extensive study, anomalous bronchial arteries have also been reported to arise from the thyrocervical trunk, internal mammary artery, costocervical trunk, lateral thoracic artery, and the inferior aspect of the descending thoracic aorta.^[3-9] Additionally, Battal et al recently described the origin of an anomalous bronchial artery from the right coronary artery via multidetector computed tomography (MDCT) [Table 1].^[10]

MDCT angiography is a proven method for the evaluation of the bronchial arteries. In their retrospective study comparing conventional angiography with thin-section MDCT angiography, Remy-Jardin et al found concordant identification of the number and origin of bronchial

arteries in 86% of cases.^[8] Use of MDCT angiography prior to attempted BAE may provide assistance in directing selective catheterization, particularly in the setting of an anomalous origin of the bronchial arteries, possibly reducing procedure time. Further, MDCT has the added benefit of providing an opportunity to identify non-bronchial artery bleeding sources such as non-bronchial systemic arteries, bronchiectasis, bronchogenic carcinomas, and aspergillomas.^[11] The normal adult bronchial arteries measure less than 1.5 mm in diameter at their origin and 0.5 mm at their point of entry into a bronchopulmonary segment.^[11] Abnormal or hypertrophic bronchial arteries measure greater than 2 mm in diameter on MDCT.

We believe that this case represented a true bronchial artery, rather than a non-bronchial systemic collateral artery for several reasons. First, the 1-mm vessel diameter is well within the normal range for a native bronchial artery. Second, there was no evidence of pleural thickening, significant pulmonary disease, or associated systemic collateralization to suggest that this vessel had arisen secondary to an underlying pathologic process. Third, the patient had no prior history of bronchial artery embolization that would have lead to the recruitment of

Table 1: Reported anomalous bronchial arteries

| Author | Modality | Number of anomalous bronchial arteries | Origin(s) |
|----------------------------------|--------------------------------|---|--|
| Caudwell et al ^[2] | Cadaveric dissection | 25 | 22 (14.7%) aortic arch; 1 R subclavian artery; 2 L subclavian artery |
| O'Rahilly et al ^[12] | Cadaveric dissection | 1 | Left subclavian artery |
| Liebow et al ^[9] | Cadaveric dissection | 16 | All from aortic arch |
| Ishihara et al ^[13] | Angiography | 2 | Internal thoracic artery; Intercostal diaphragmatic artery |
| Kasai et al ^[14] | Cadaveric dissection | Many | Bilateral subclavian arteries and branches (internal thoracic, thyrocervical); aortic arch; distal descending thoracic aorta |
| Moore et al ^[15] | Angiography | 1 | Right thyrocervical trunk |
| Rabkin et al ^[5] | Angiography | 6 | 5 subclavian artery, 1 "thyroid axis" |
| Keller et al ^[16] | Angiography | 29 | 1 R internal thoracic; 3 phrenic artery; 9 intercostal artery; 16 branches of the subclavian or axillary arteries |
| McPherson et al ^[6] | Angiography | 2 | 1 superior aortic arch between brachiocephalic and L carotid; 1 R internal thoracic artery |
| Cohen et al ^[17] | Angiography | 15 | 9 thyrocervical trunk; 4 internal thoracic artery; 1 costocervical trunk; 1 lower intercostal artery |
| Cohen et al ^[4] | Angiography | 5 | 1 L thyrocervical trunk; 1 L internal thoracic artery; 2 R thyrocervical trunk; 1 R internal thoracic artery |
| Murayama et al ^[18] | CT angiography | 1 | Inferior descending thoracic aorta |
| Chang et al ^[19] | Angiography | 4 | 1 R subclavian proximal to origin of internal thoracic artery; 1 R internal thoracic artery; 1 lateral thoracic; 1 directly from arch |
| Tanaka S et al ^[20] | Cadaveric dissection | 1 | Right subclavian artery |
| Sancho et al ^[3] | Angiography | 27 | 24 from aortic arch; 1 L thyrocervical trunk; 1 from R subclavian artery; 1 from lower descending thoracic aorta |
| Barben et al ^[7] | Angiography | 4 | 2 internal thoracic artery, 1 thyrocervical trunk, 1 lateral thoracic |
| Gypen et al ^[21] | Angiography | 1 | Left internal mammary artery |
| Remy-Jardin et al ^[8] | Angiography and CT angiography | 12: 4 right (17%), 8 left (27%) (21% total) | Right: concavity of aortic arch (n=2), right subclavian (n=2); Left: concavity of aortic arch (n=6), lower third of aorta (n=2) |
| Kawate et al ^[22] | Angiography | 1 | Left subclavian artery |
| Battal et al ^[10] | CT angiography | 1 | Right coronary artery |
| Battal et al ^[23] | CT angiography | 58 | 2 R subclavian artery; 2 L subclavian artery; 2 R thyrocervical trunk; 2 L thyrocervical trunk; 1 R internal mammary artery; 1 aberrant R subclavian artery; 29 from aortic arch; 19 from descending aorta either above (10) or below (9) T5/6 |

abnormal collateral vessels. Fourth, no additional candidate bronchial arteries were identified. Finally, and most importantly, this vessel coursed along the tracheobronchial tree, which is the main distinguishing characteristic of a bronchial artery [Figure 2c].

A complete knowledge of bronchial artery anatomy, including the locations of their common aberrant origin, is a prerequisite for successful complete angiographic assessment of the bronchial artery distribution as well as for successful embolization procedures. Failure to identify a causative bronchial artery arising from the descending aorta should prompt a search for an aberrant origin, including an evaluation of the aortic arch and of the bilateral subclavian arteries and their branch vessels. In light of the case presented here, consideration of an origin from the vertebral artery should be entertained in cases of persistent failed identification.

ACKNOWLEDGMENTS

The authors would like to thank Laura Pierce, RT for her gracious help in generating the images for this report.

REFERENCES

1. Yoon W, Kim JK, Kim YH, Chung TW, Kang HK. Bronchial and nonbronchial systemic artery embolization for life-threatening hemoptysis: A comprehensive review. *Radiographics* 2002;22:1395-409.
2. Cauldwell EW, Siekert RG, Lininger RE, Anson BJ. The bronchial arteries; an anatomic study of 150 human cadavers. *Surg Gynecol Obstet* 1948;86:395-412.
3. Sancho C, Escalante E, Dominguez J, Vidal J, Lopez E, Valdeperas J, et al. Embolization of bronchial arteries of anomalous origin. *Cardiovasc Intervent Radiol* 1998;21:300-4.
4. Cohen AM, Antoun BW, Stern RC. Left thyrocervical trunk bronchial artery supplying right lung: Source of recurrent hemoptysis in cystic fibrosis. *AJR Am J Roentgenol* 1992;158:1131-3.
5. Rabkin JE, Astafjev VI, Gothman LN, Grigorjev YG. Transcatheter embolization in the management of pulmonary hemorrhage. *Radiology* 1987;163:361-5.
6. McPherson S, Routh WD, Nath H, Keller FS. Anomalous origin of bronchial arteries: Potential pitfall of embolotherapy for hemoptysis. *J Vasc Intervent Radiol* 1990;1:86-8.
7. Barben J, Robertson D, Olinsky A, Ditchfield M. Bronchial artery embolization for hemoptysis in young patients with cystic fibrosis. *Radiology* 2002;224:124-30.
8. Remy-Jardin M, Bouaziz N, Dumont P, Brillet PY, Bruzzi J, Remy J. Bronchial and nonbronchial systemic arteries at multi-detector row CT angiography: Comparison with conventional angiography. *Radiology* 2004;233:741-9.
9. Liebow AA. Patterns of origin and distribution of the major bronchial arteries in man. *Am J Anat* 1965;117:19-32.
10. Battal B, Saglam M, Ors F, Akgun V, Dakak M. Aberrant right bronchial artery originating from right coronary artery - MDCT angiography findings. *Br J Radiol* 2010;83:e101-4.
11. Deffebach ME, Charan NB, Lakshminarayan S, Butler J. The bronchial circulation. Small, but a vital attribute of the lung. *Am Rev Respir Dis* 1987;135:463-81.
12. O'Rahilly R, Debson H, King TS. Subclavian origin of bronchial arteries. *Anat Rec* 1950;108:227-38.
13. Ishihara T, Inoue H, Kobayashi K, Murakami M, Ikeda T, Kikuchi K, et al. Selective bronchial arteriography and hemoptysis in nonmalignant lung disease. *Chest* 1974;66:633-8.
14. Kasai T, Chiba S. Macroscopic anatomy of the bronchial arteries. *Anatomischer Anzeiger* 1979;145:166-81.
15. Moore LB, McWey RE, Vujic I. Massive hemoptysis: Control by embolization of the thyrocervical trunk. *Radiology* 1986;161:173-4.
16. Keller FS, Rosch J, Loflin TG, Nath PH, McElvein RB. Nonbronchial systemic collateral arteries: Significance in percutaneous embolotherapy for hemoptysis. *Radiology* 1987;164:687-92.
17. Cohen AM, Doershuk CF, Stern RC. Bronchial artery embolization to control hemoptysis in cystic fibrosis. *Radiology* 1990;175:401-5.
18. Murayama S, Hashiguchi N, Murakami J, Sakai S, Matsumoto S, Mizushima A, et al. Helical CT imaging of bronchial arteries with curved reformation technique in comparison with selective bronchial arteriography: Preliminary report. *J Comput Assist Tomogr* 1996;20:749-55.
19. Chang AB, Ditchfield M, Robinson PJ, Robertson CF. Major hemoptysis in a child with cystic fibrosis from multiple aberrant bronchial arteries treated with tranexamic acid. *Pediatr Pulmonol* 1996;22:416-20.
20. Tanaka S, Nakatani T, Mizukami S, Lee HY, Chung IH. Right superior bronchial artery arising from the right subclavian artery and accompanying nerve branches: An autopsy case. *Kaibogaku zasshi J Anat* 1997;72:455-60.
21. Gypen BJ, Poniewierski J, Rouhanimesh Y, Dieudonne T, Van Mulders AP, d'Archambeau OC, et al. Severe hemoptysis 6 years after coronary artery bypass grafting. *Ann Thorac Surg* 2003;75:999-1001.
22. Kawate T, Futamata H, Kitami Y, Takeda S. Rare multiple combined anomaly of the vertebral vessels and bronchial artery. *Anat Sci Int* 2008;83:267-72.
23. Battal B, Akgun V, Karaman B, Bozlar U, Tasar M. Normal anatomical features and variations of bronchial arteries: An analysis with 64-detector-row computed tomographic angiography. *J Comput Assist Tomogr* 2011;35:253-9.

Source of Support: Nil, **Conflict of Interest:** None declared.