



Original Research Diagnostic Radiology

Does computed tomography-derived volumetry and densitometry of psoas muscle really correlate with complications in rectal cancer patients after elective surgery?

Jiri Kotek¹, Petr Lochman¹, Michal Hulek², Miroslav Sirovy³, Tomas Merkl⁴, Eva Cermakova⁵, Katerina Kotkova⁶, Jiri Paral³, Tomas Dusek¹

¹Department of Field Surgery, University of Defence, Military Faculty of Medicine, Departments of ²Radiology, ³Surgery, ⁴Pediatric Surgery and Traumatology, University Hospital Hradec Kralove, ⁵Department of Medical Biophysics, Medical Faculty Hradec Kralove, Charles University, ⁶Department of Urgent Medicine, University Hospital Hradec Kralove, Hradec Kralove, Czech republic.



***Corresponding author:**

Jiri Kotek,
Department of Field Surgery,
University of Defence, Military
Faculty of Medicine, Hradec
Kralove, Czech Republic.

kotini25@gmail.com

Received: 17 April 2024

Accepted: 29 May 2024

Published: 24 July 2024

DOI

10.25259/JCIS_43_2024

Quick Response Code:



ABSTRACT

Objectives: Although sarcopenia is recognized as one of the risk factors for increased morbidity after resection for colorectal cancer, the question of the most appropriate way to identify and quantify it is still unresolved.

Material and Methods: This is a retrospective unicentric study following patients undergoing elective resection of the rectum for carcinoma with available staging computed tomography (CT) of the trunk. Psoas muscle density (PMD) and its area relative to patient height psoas muscle index (PMI) at the level of inferior vertebral end plate of third lumbar vertebra (L3) were assessed using an initial staging CT scan of the trunk. Post-operative complications, evaluated according to the Clavien-Dindo classification, and blood samples on post-operative days (POD) 3 and 5 were also recorded in the study population. Patients were divided into groups with complicated and uncomplicated post-operative course, and observed parameters were then statistically compared.

Results: The correlation of PMI values with the development of post-operative complications was not confirmed in a data set of 206 patients. PMD values were found to be borderline statistically significant in patients with complicated post-operative course, while in the group of patients with severe complications (Clavien-Dindo III-IV), there was no statistically significant difference in PMI or PMD values. The same results were obtained when comparing patients with anastomotic leak (AL). It was confirmed that operations on the lower rectum are riskier for the development of post-operative complications. The secondary objective of our study regarding serum C-reactive protein (CRP) levels of 3rd and 5th POD gave us the answer in the form of cutoff values of 115.7 mg/L (3rd POD) and 76 mg/L (5th POD).

Conclusion: PMD appears to be a promising tool for predicting post-operative morbidity in patients after rectal resection, but a clear consensus on the method of measurement, interpretation of results and cutoff values is needed. Lower rectal resections are burdened with a higher risk of post-operative complications, especially AL. Monitoring of CRP levels remains an important marker in the prediction of AL due to its negative predictive value.

Keywords: Psoas volumetry, Psoas densitometry, Sarcopenia, Rectal cancer, Complications

INTRODUCTION

According to the World Health Organization Global Cancer Observatory (GLOBOCAN) project for 2020, colorectal cancer is the third most common malignancy after breast cancer in women

This is an open-access article distributed under the terms of the Creative Commons Attribution-Non Commercial-Share Alike 4.0 License, which allows others to remix, transform, and build upon the work non-commercially, as long as the author is credited and the new creations are licensed under the identical terms.

©2023 Published by Scientific Scholar on behalf of Journal of Clinical Imaging Science

and lung cancer (in both sexes) and the second most common cause of death from malignancy. There were 732 000 new rectal tumors registered for 2020. The highest incidence of the disease is in Europe, East Asia, and Australia, despite the fact that it is a preventable disease and in most developed countries with an established screening program.^[1] There has been a year-on-year increase in incidence in the age group <50 years of up to 1–4%.^[2,3]

The therapy of colorectal cancer is currently a combination of oncological and surgical treatment. Despite the standardization of processes and technical and technological advances in surgical treatment, there is still a high rate of post-operative complications. According to current studies, sarcopenia appears to be an important and therapeutically controllable risk factor for post-operative complications.^[4-8]

Sarcopenia is defined as a generalized, progressive skeletal muscle disorder characterized by an accelerated loss of muscle mass and function, associated with an increased incidence of adverse events such as falls, leading to a decline in activity, development of frailty, and ultimately increasing mortality.^[9] According to the updated definition of the European Working Group on Sarcopenia in Older People, an important aspect is the decline in muscle strength, which seems to be more important and, above all, more measurable in clinical practice than muscle quality and quantity.^[10] The changes are not only functional but also structural. Histologically, there is loss of muscle fibers or fatty degeneration.

Loss of muscle mass is a natural consequence of aging, but pathologically it can be accelerated by various disease states, such as malignant processes. Sarcopenia is a proven risk factor for post-operative complications and overall poorer prognosis of patients. These claims are supported by a number of studies already conducted, for example, in patients with gastric cancer, rectal cancer, patients undergoing emergent laparotomy, or patients with acute mesenteric ischemia.^[5,11-13] Radiological imaging methods such as dual X-ray absorptiometry, computed tomography (CT), and magnetic resonance imaging (MRI) are one of the ways to detect muscle loss or changes in muscle structure.^[9] As shown in the work of Shen *et al.* and Mourtzakis *et al.*, the examination of skeletal muscles on CT section at the level of the third lumbar vertebra (L3) correlates strongly with the skeletal muscle status of the whole body.^[14,15] However, we found a number of controversies in the previous studies. In the work of Chai *et al.* found that sarcopenia is significantly associated with the incidence of postoperative complications after curative colorectal cancer resections.^[4] In this work, they defined sarcopenia by CT volumetry using total abdominal muscle area, or also skeletal muscle area (TAMA or SMA, including the abdominal muscles, psoas, and erector spinae). A similar view is also presented by Rutten *et al.*^[16]

The authors Wu *et al.* and after him also Benedek *et al.* agree that a suitable predictive tool for post-operative complications is the total psoas area (TPA), even when compared to psoas muscle density (PMD).^[12,17] In contrast, Pekarova *et al.* found PMD to be predictive and TPA to be insignificant, which is consistent with the study by Cuijpers *et al.*^[18,19] A very recent study by Xiao *et al.* then evaluates that PMD in particular is a predictive tool that correlates with the development of short-term post-operative complications in the population over 65 years of age, compared to TAMA and TPA.^[20]

The primary objective of this study is to validate the claim that CT volumetry and densitometry of the musculus psoas can be used for pre-operative prediction of complications in patients undergoing elective rectal resection.

The secondary objective is to confirm the predictive value of serum C-reactive protein (CRP) levels in post-operative prediction of anastomotic leak (AL) development.

MATERIAL AND METHODS

This study was approved by the Ethics Committee of the Hradec Králové University Hospital. All the patients were informed about the study and the informed consent was obtained. A retrospective data analysis was performed on 305 patients who underwent surgical treatment for rectal cancer at the University Hospital Hradec Kralove between January 2017 and December 2021. Inclusion criteria were planned resection of the rectum for cancer with primary anastomosis and available staging CT of the trunk. Exclusion criteria were acute surgery, surgery other than rectal resection with primary anastomosis, and unavailable staging CT scan. Of the original cohort, 206 patients met the inclusion criteria for the study.

Patients underwent pre-operative staging trunk CT scans, which were stored in the picture archiving and communication system (PACS). Total psoas muscle area (PMA) was measured bilaterally and PMD was measured in the PACS using professional imaging software MUSE JiveX (VISUS Health IT GmbH Transfer, Bochum, Germany). Standard pre-operative staging CT is performed using Iomeprolum 90 mL intravenous contrast agent (Iomeron, Bracco S.p.A.). The analysis and calculation of these CT scan data was performed by a single radiologist without knowledge of other patient data to avoid potential bias in the results. PMA and PMD analysis was performed on a single CT slice at the level of the L3 inferior end plate [Figure 1]. Manual tracing of the muscle edges was used to determine the PMA, while plotting and averaging the Hounsfield unit (HU) values for the area, ranging from –30 to 150 HU for skeletal muscle, was used to determine the PMD [Figure 2]. The PMA was related to the patient's height for a more accurate correlation, resulting in the psoas muscle index (PMI).

Pre-operative anamnestic and post-operative hospital course data were obtained from the electronic records of the

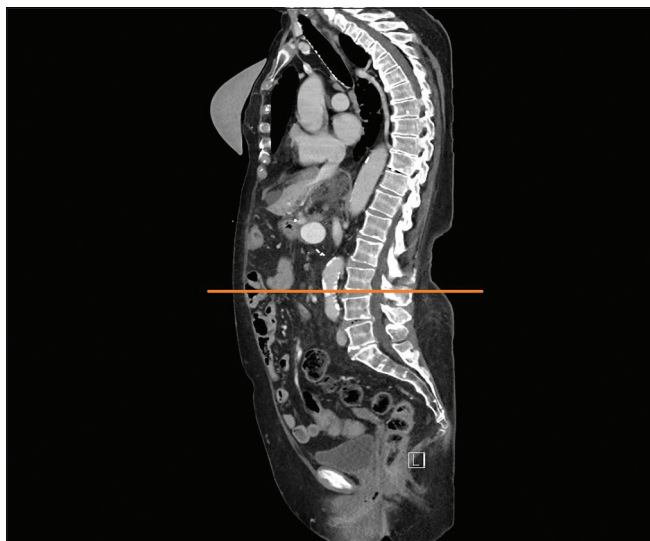


Figure 1: Orange line defines the plane of the inferior end plate of third lumbar vertebra.

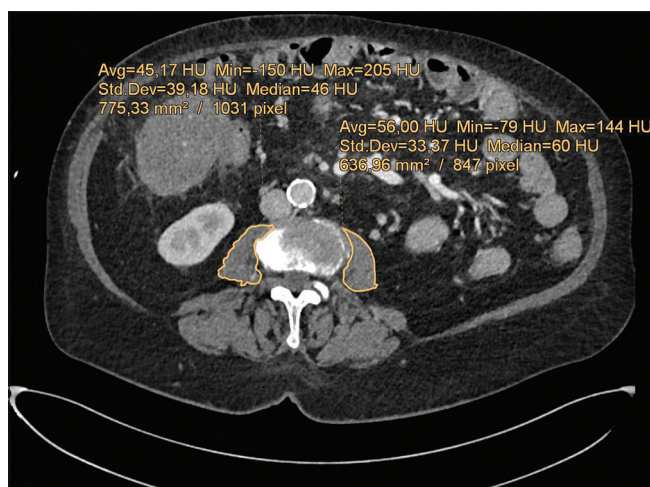


Figure 2: Orange “circle” is the hand-drawn boundary of right and left psoas muscle and calculation of its area and density. (Avg: Average, Min: Minimum, Max: Maximum, Std. Dev.: Dstandard deviation, HU: Hounsfield units)

hospital information system. This included demographic and clinicopathological information such as Age, sex, body mass index (BMI), nicotine use, American Society of Anesthesiology grade, neoadjuvant chemoradiotherapy, tumor location, histological grading, and tumor node metastasis classification. Post-operative outcomes included leukocyte and CRP levels on post-operative days (POD) 3 and 5 and the incidence of complications. Complications were, further, subdivided into Clavien-Dindo 0–II and Clavien-Dindo III–V based on the Clavien-Dindo classification, which were classified as major.^[21,22] Particular attention was paid to AL.

Statistical analysis of collected data was performed using Number Cruncher Statistical Systems (NCSS) Statistical Software (NCSS, LLC, Kaysville, Utah, USA), data with normal distribution were presented as mean \pm standard deviation, and Student’s *t*-test was used to compare groups. Data with rejected normal distribution were presented as median and interquartile range, Mann–Whitney U-test and Kolmogorov–Smirnov test were used for comparison. Results were considered significant at a level of $P < 0.05$.

RESULTS

A total of 206 patients were enrolled in accordance with the study entry criteria. The basic characteristics of the cohort are shown in Table 1. The median age was 67 years, and there were 135 men (65.5%) in the study cohort. There was an association between the occurrence of post-operative complications and PMD at the borderline of statistical significance – [Figure 3]. There was no statistically significant difference for the PMI comparison – [Figure 4]. Tumor localization in the lower rectum appeared to be statistically significant for the development of complications, compared to localization in the upper or middle rectum. Leukocyte (White blood count) and C-reactive protein (CRP) levels of POD 3 and 5 in patients who experienced a complication during hospitalization were also statistically significant.

For comparison with other studies, PMD and PMI were also evaluated to classify complications into severe and non-severe, that is, grade 0–II and grade III–IV according to the Clavien-Dindo classification, as shown in Table 2. No statistically significant relationship was found between these values.

Based on the evaluation of the severity of post-operative complications according to the Clavien-Dindo classification, the complications were categorized as follows: Grade I in 18 patients (21.95%), Grade II in 25 patients (30.49%), Grade III in 21 patients (25.61%), and Grade IV in 18 patients (21.95%). In 82 patients, a total of 107 complications were reported, indicating that some patients experienced several complications during hospitalization. The list of the most significant and most frequent complications is presented in Table 3.

AL remains the most frequent and the most feared complication in colorectal surgery, which was diagnosed in 51 patients (24.76%) in our cohort, of which clinically manifest AL (grade B and C) was diagnosed in 33 patients (16.01%).^[23] Evaluation of AL according to Clavien-Dindo classification was as follows: Grade A = Clavien-Dindo I–II, Grade B = Clavien-Dindo III, and Grade C = Clavien-Dindo IV. The AL was diagnosed by the clinical course and laboratory parameters on POD 3 and 5. Each patient also underwent endoscopic inspection of anastomosis on POD

Table 1: Demographic data and clinical characteristics.

	Total (n=206)	No complication (n=124)	Complication (n=82)	P-value
PMI, median (0.25, 0.75) cm ² /m ²	6.57 (5.46, 7.95)	6.59 (5.48, 8.26)	6.50 (5.35, 7.83)	0.671
PMD, median (0.25, 0.75) HU	47.72 (41.37, 54.35)	49.05 (42.23, 55.29)	45.21 (39.51, 53.11)	0.056
Age, median (0.25, 0.75) years	67 (59, 73)	67 (57, 74)	68 (62, 73)	0.546
BMI, median (0.25, 0.75) kg/m ²	27.7 (24.9, 30.5)	27.3 (24.9, 30.6)	28.6 (24.8, 30.4)	0.597
Gender				0.498
Male, n (%)	135 (65.53%)	79 (63.7)	56 (68.3)	
Female, n (%)	71 (34.47)	45 (36.3)	26 (31.7)	
ASA score				0.457
≤2, n (%)	122 (59.23)	76 (61.3)	46 (56.1)	
≥3, n (%)	84 (40.77)	48 (38.7)	36 (43.9)	
Tumor location				0.041
Upper, n (%)	102 (49.5)	64 (51.6)	38 (46.4)	
Middle, n (%)	74 (35.9)	47 (37.9)	27 (32.9)	
Lower, n (%)	30 (14.6)	13 (10.5)	17 (20.7)	
TNM stage				0.434
I, n (%)	48 (23.3)	29 (23.3)	19 (23.1)	
II, n (%)	79 (38.3)	43 (34.7)	36 (43.9)	
III, n (%)	64 (31.1)	41 (33.1)	23 (28.1)	
IV, n (%)	15 (7.3)	11 (8.9)	4 (4.9)	
Neoadjuvant therapy, n (%)	125 (60.7)	79 (63.7)	46 (56.1)	0.357
Type of operation				0.523
Robotic, n (%)	130 (63.1)	80 (64.5)	50 (61)	
Laparoscopic, n (%)	50 (24.3)	31 (25)	19 (23.2)	
Conventional, n (%)	26 (12.6)	13 (10.5)	13 (15.8)	
Diverting stoma	61 (29.6%)	33 (26.6%)	28 (34.1)	0.246
WBC 3. POD, median (0.25,0.75) *10 ⁶	8.05 (6.28, 10.24)	7.58 (6.22, 9.28)	8.87 (6.84, 11.16)	0.004
WBC 5. POD, median (0.25,0.75) *10 ⁶	7.28 (5.66, 9.72)	6.59 (5.26, 8.72)	8.4 (6.04, 10.64)	0.0025
CRP 3. POD, median (0.25,0.75) mg/L	92.8 (57.6, 149.1)	75.1 (51, 108.7)	130.5 (76.3, 226.3)	<0.0001
CRP 5. POD, median (0.25,0.75) mg/L	52.1 (23.7, 94.8)	38.4 (18.3, 57.9)	88.2 (47.5, 162.7)	<0.0001

PMI: Psoas muscle index, PMD: Psoas muscle density, BMI: Body mass index, ASA: American society of anesthesiologists, TNM: Tumor, node, metastasis, WBC: White blood count, CRP: C-reactive protein, POD: Post-operative day, HU: Hounsfield unit. Bold values: Means values with statistical significance.

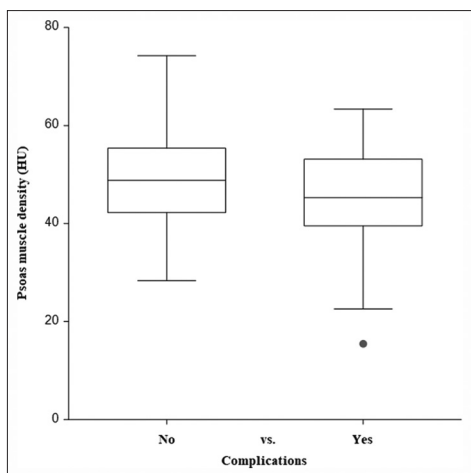


Figure 3: Comparison of values for psoas muscle density in patients with complicated and uncomplicated post-operative course. (median, inter-quartile range [IQR], whisker boundaries = $\times 1.5$ IQR). (The black dot is value which is out of even whisker boundaries - in this case 1 patient). (HU: Hounsfield unit).

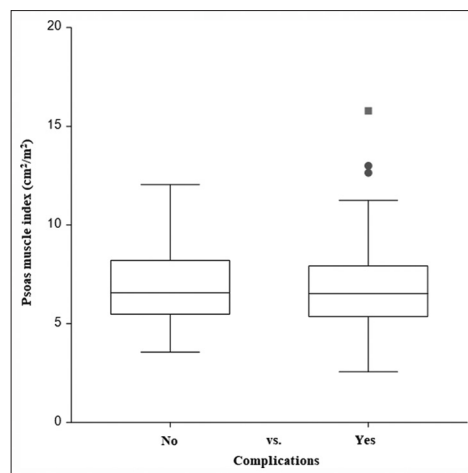


Figure 4: Comparison of values for psoas muscle index in patients with complicated and uncomplicated post-operative course. (median, inter-quartile range [IQR], whisker boundaries = $\times 1.5$ IQR). (The black dot is value which is out of even whisker boundaries - in this case 3 patients)

Table 2: Comparison of PMI and PMD according to severity of complications.

	Clavien-Dindo classification		P-value
	Dindo 0–II (n=167)	Dindo III–IV (n=39)	
PMI, median (0.25, 0.75) cm ² /m ²	6.66 (5.47, 8.33)	6.39 (5.33, 7.25)	0.178
PMD, median (0.25, 0.75) HU	47.7 (41.64, 53.63)	48.93 (39.54, 54.66)	0.781

PMI: Psoas muscle index, PMD: Psoas muscle density, HU: Hounsfield unit

Table 3: List of post-operative complications.

Complications	Total	
	Total	%
Surgical site infection		
Superficial	3	2.8
Deep	4	3.7
Intraperitoneal abscess	3	2.8
Anastomotic leak		
Type A	18	16.8
Type B	16	14.9
Type C	17	15.9
Noninfectious wound complications		
Seroma, hematoma	7	6.5
Rectovaginal, rectovesical fistula	5	4.8
Cardiovascular and respiratory		
Cardiac arrest	3	2.8
Arrhythmia with intervention	3	2.8
Cardiac failure decompenzation	1	0.9
Bronchopneumonia	2	1.8
Sepsis and shock	5	4.8
Ileus	3	2.8
Bleeding	3	2.8
Others	14	13.1

5–10, if not reoperated earlier for AL. The most frequent surgical procedure was then anastomosis disconnection and derivation through terminal stoma according to Hartmann (8 patients). Axial ileostomy was constructed in six cases. Two patients underwent drainage only, a diverting stoma was already constructed during the primary procedure. One patient underwent dehiscence resuture under general anesthesia. Selected values compared for patients with and without AL are provided in Table 4.

A statistically significant risk factor for the development of AL was the localization of the tumor and, thus, the construction of the anastomosis in the lower rectum. The fact that the construction of defunctioning stomas does not reduce the incidence of AL was confirmed ($P = 0.696$). However, the claim that stoma construction reduces grade of AL was not confirmed ($P = 0.4$), which is contrary to recent studies.^[24,25]

The secondary aim of the study was to verify the correlation of CRP levels with the development of AL, but also other

complications. In this case, their negative predictive value (NPV) is particularly statistically significant. Using receiver operating characteristic (ROC) analysis, cutoff values for CRP levels of POD 3 and 5 in relation to the risk of developing AL were determined. The cutoff for CRP level of 3rd POD was 115.7 mg/L. For this value, the sensitivity (SE) was 0.807, specificity (SPEC) 0.703, positive predictive value (PPV) 0.368 (95% confidence interval [CI] 0.254–0.493), NPV 0.944 (95% CI 0.883–0.979), and area under the curve (AUC) 0.825. The cutoff for CRP level on post-operative day 5 was 76 mg/L (SE = 0.936, SPEC = 0.779, PPV = 0.475 [95% CI 0.346–0.607], NPV = 0.983 [95% CI 0.939–0.998], and AUC = 0.919). These values are in broad agreement with the results of the present studies.^[26–28]

DISCUSSION

Sarcopenia has attracted attention in recent years as a risk factor for increased incidence of post-operative complications and poor patient survival. These claims are reported, for example, in studies by Gaillard *et al.*, in which they monitored the incidence of leakage after sleeve gastrectomy using pre-operative detection of sarcopenic obesity.^[29] Berkel *et al.* reported a significant relationship between sarcopenic obesity and post-operative complications in patients after chemoradiotherapy and after resections for rectal cancer.^[8] Miyamoto *et al.* confirmed the predictive value of sarcopenia in patients treated for colorectal cancer.^[30] These patients had worse prognosis, shorter recurrence-free survival, and overall survival. Sarcopenia was also identified as an independent predictive factor for the development of complications in patients undergoing resection for colorectal cancer by Nakanishi *et al.*^[31]

Thanks to the latest revised recommendations for the diagnosis of sarcopenia, we know that the decline in muscle strength is more important for clinical practice than changes in muscle volume and structure detectable by imaging examination. Thus, CT and MRI remain mainly a research tool, given their availability, radiation burden in the case of CT and higher cost in the case of MRI.^[10] The studies performed often present conflicting results using different methodologies and examining several variants of muscle groups, which introduces a number of uncertainties into this issue.

Table 4: Comparison of selected values in AL patients.

	AL		P-value
	AL (n=51)	No leak (n=155)	
PMI, median (0.25,0.75) cm ² /m ²	6.49 (5.22, 7.62)	6.57 (5.51, 8.21)	0.522
PMD, median (0.25,0.75) HU	45.33 (39.40, 54.34)	48.45 (41.97, 54.66)	0.278
Age, median (0.25,0.75) years	68 (60, 72)	67 (58, 74)	0.668
BMI, median (0.25,0.75) kg/m ²	27.3 (25.4, 30.4)	27.7 (24.9, 30.6)	0.914
Gender			0.592
Male, n (%)	35 (68)	100 (64)	
Female, n (%)	16 (32)	55 (36)	
Tumor location			0.016
Upper, n (%)	17 (33.3)	85 (54.8)	
Middle, n (%)	22 (43.2)	52 (33.5)	
Lower, n (%)	12 (23.5)	18 (11.7)	
Neoadjuvant therapy, n (%)	32 (62.8)	94 (60.7)	0.790
Type of operation			0.667
Robotic, n (%)	34 (66.7)	96 (61.9)	
Laparoscopic, n (%)	10 (19.6)	40 (25.8)	
Conventional, n (%)	7 (13.7)	19 (12.3)	
Diverting stoma, n (%)	14 (27.5)	47 (30.3)	0.696
CRP 3. POD, median (0.25,0.75) mg/L	167.7 (102.1, 229.7)	77.6 (50.3, 113.3)	<0.0001
CRP 5. POD, median (0.25,0.75) mg/L	114.2 (63.6, 202.8)	40.3 (20.5, 71)	<0.0001

PMI: Psoas muscle index, PMD: Psoas muscle density, BMI: Body mass index, CRP: C-reactive protein, POD: Post-operative day, HU: Hounsfield unit, AL: Anastomotic leak. Bold values: Means values with statistical significance.

For example, Chai *et al.* analyzed a group of 228 colorectal cancer patients using TAMA to measure sarcopenia.^[4] As a result, sarcopenia was considered as a predictive factor for major complications in patients with colorectal cancer and for any complications in patients with rectal cancer. Benedek *et al.*, in their prospective study of 51 patients with colorectal cancer, used PMA measurement and its conversion to PMI, which correlated with the incidence of post-operative complications.^[17] In this study, PMD was also measured but without clinically significant impact. Similar results were also presented by Wu *et al.* using data from 228 patients who underwent emergent laparotomy.^[12] In this study, PMI was monitored, which again was significantly correlated with morbidity, and also PMD, which, in contrast, was not found to be a significant parameter for predicting post-operative complications. Using data from 350 colorectal cancer patients undergoing resection, Richards *et al.* concluded that sarcopenia, as measured by PMI, was associated with an increased risk of post-operative complications, longer hospital stay and higher mortality.^[32] A similar study but without PMD measurements was conducted by Jones *et al.*, who identified PMI in 100 patients operated for colorectal cancer as a tool to predict major post-operative complications.^[33]

However, some recent studies contradict these claims. Pekarova *et al.* analyzed 118 patients with colorectal cancer after resection procedures.^[18] TAMA and PMA were monitored and had no correlation with the development

of major post-operative complications. In contrast, PMD showed a strong correlation in both patients after colon and rectal resection. These results were also supported by Cuijpers *et al.*, who, in an analysis of 238 patients undergoing surgical treatment for colorectal cancer, concluded that low pre-operative PMD was associated with an increased incidence of major post-operative complications.^[19] Blackwell *et al.* used PMD to determine myosteatosis in 1122 patients undergoing elective colorectal surgeries.^[34] Based on their results, they found that myosteatosis was not predictive of major complications, although it appeared to be a predictive factor for the incidence of AL. Xiao *et al.* demonstrated in an analysis of 191 patients over 65 years of age that TAMA and PMA did not correlate with the development of major post-operative complications; in contrast, PMD was strongly predictive.^[20]

Our study does not support the hypothesis of a correlation of PMI or PMD with the risk of developing major post-operative complications according to Clavien-Dindo. In terms of predicting the development of post-operative complications alone, PMD appeared to be borderline significant. Based on our results, we cannot say with certainty whether these values can be used as a predictive tool for the development of complications after rectal resections. However, it can be said that PMD is the most promising of the screening options, although further efforts are needed to implement it in clinical practice.

Why do our results differ from those of most authors? One factor may be the use of CT scans with contrast agent. While some of the studies compared so far have used a native scan without contrast agent,^[7,18,20] we have also come across studies that have used a contrast scan.^[19,34] According to the work of Rollins *et al.*, significant differences can be observed in the measurement of muscle density between the different phases of the examination.^[35] They reported a difference of up to 18% between the native and contrast scan in the venous phase. Van Vugt *et al.*, in another paper, highlighted a significant difference in muscle density results when using contrast and non-contrast CT scans, but this did not affect the measured muscle area.^[36] Based on their results, they recommended the standard use of contrast scans in the venous phase. However, our measured values are very close to those reported by Herrod *et al.* and Pekarova *et al.*^[7,18] The results of Xiao *et al.* differ slightly more, but we explain this difference by the fact that the measurements were performed on a sample of the Asian population.^[20] The difference in PMD values alone in these studies between the group with and without complications is only a few units of HU. Despite being reported as statistically significant, this difference is so small in clinical use and thus not applicable as a tool without clearly defined cutoff values. In addition to the differences in scan phases, the study also speaks to the dependence of the software used to evaluate them. According to Rollins *et al.*, who tested four muscle parameters using two different software, the results were statistically significantly different in all parameters studied.^[37] This fact was confirmed by van Vugt *et al.* and Teigen *et al.*^[38,39]

Another reason for the difference between the results of our work and the work of other authors seems to be the lack of consistency in the concept of how to approach the measurement itself. Most current studies performed measurements at the L3 level, where both transverse processes were visible.^[7,18-20,34] Wu *et al.*,^[12] like us, used data from the L3 level of the inferior endplate, which are well documented by Simpson *et al.*^[40,41] in patients undergoing emergent laparotomy. Another important issue in the case of PMD assessment is the potential of the surrounding tissue to influence the outcome when drawing the muscle boundary. This problem was solved by Pekarova *et al.* by shifting the area of selection 3 mm centrally from the measured muscle border when measuring PMD.^[18]

In addition, the choice of muscle model, which for most studies has been the psoas muscle, is also diverging. According to the work of Shen *et al.* and Mourtzakis *et al.*, the volume of muscle tissue at the L3 level correlated linearly with the state of all muscle mass in the body.^[14,15] This hypothesis was also confirmed by Rollins *et al.*, who, further, investigated whether the psoas muscle can be used as a separate model correlating with the state of muscle tissue at the L3 level.^[42]

In her work, PMA correlated with TAMA (SMA), although PMD had higher values on average, thus underestimating the incidence of myosteatosis. Thus, due to its simple and rapid measurability, the psoas muscle has become a simplified model for predicting post-operative outcomes, despite the fact that this muscle is easily affected by catabolism in inactivity, as well as in degenerative diseases and spinal fractures.^[16] As a major hip flexor, a decrease in hip strength is also a sign of decreased functional capacity and is associated with an increased risk of falls and other complications, as also noted by Looijaard *et al.*^[43] Rutten *et al.*, in their work in patients with ovarian cancer, found that PMA did not have the same predictive power as SMA (TAMA) and, therefore, did not recommend its simplified use.^[16] Rather, the current consensus is that muscle area measurements (either PMA or SMA) do not correlate with post-operative morbidity.^[18,20,43]

Overall, there are few studies attempting to map the condition of muscle tissue in a large cohort of patients undergoing CT scans. Therefore, cutoff values corresponding to the results of population-based studies are not available. An attempt in this direction is at least the work of Hamaguchi *et al.*, who analyzed data in 541 healthy adult donors for living donor liver transplantation (LDLT).^[44] They used CT scan to analyze PMI at the L3 level and thus determined cutoff values for males and females, moreover in different age groups of the Asian population. In other work, Lawlor *et al.* looked at psoas muscle values in healthy young Americans aged 19–40 years.^[45] In this work, they established cutoff values for both PMI and PMD in both sexes. De Marco *et al.* analyzed data from 390 patients with benign complaints who were referred to the emergency department and had no major comorbidities.^[46] The study population ranged in age from 20 to 80 years and both PMA and PMD were analyzed. The expected outcome was differences according to gender and age. The data obtained allowed to establish population cutoff values; however, the disadvantage of this study is that the measurement was performed at L4 level, when all other studies use L3 level. Abbas *et al.* analyzed data from 1002 patients undergoing resection procedures for colorectal cancer.^[47] In this study, the authors established a cutoff for their population, although stratification by age and sex was not performed. In contrast, Bahat *et al.*, in their unicentric study including 601 patients screened as LDLT, established cutoff values for PMI and SMI at the L3 level for the Turkish population.^[48] In his conclusion, he also emphasizes the need for further validation of the results by means of further studies. Martin *et al.* identified cutoff values for myosteatosis in 1473 lung and gastrointestinal cancer patients with a history of weight loss that correlated with patient survival.^[49] These values were subsequently stratified for population use based on BMI and have provided the basis for several authors to compare post-operative outcomes and survival in colorectal cancer patients.^[50-52]

Many questions also arise with regard to the selection of the patient population. In our case, we selectively included patients with rectal tumors only, that is, up to 15 cm from the anal verge. However, most of the compared studies included patients with colon and rectal tumors together and did not take into account the specificity of rectal cancer with regard to its anatomical and pathophysiological differences.^[7,17,34,47] As confirmed by Tamas *et al.*, the treatment strategy for this disease is different and the surgical procedure is more technically demanding.^[53]

The higher incidence of AL (24.76%) in our cohort of patients is only relative, mainly due to our proactive approach when searching for this complication. All patients undergoing rectal resection are having endoscopic control of the anastomosis 5–10. POD, which allows us to detect type A AL at an increased rate, leading to a bias in the result compared to other studies. Depending on the operative diagnosis, the reported incidence of AL is between 3% and 20%, but this is the incidence of symptomatic AL.^[54–56] If we exclude type A AL from our cohort, we reach a similar result, namely, 16%.

CONCLUSION

The overall risk of lower rectal resection is increased in the context of development of post-operative complications. The importance of PMI measurement for predicting the development of these complications has not been confirmed, the determination of PMD values is at the very limit of statistical significance. Further, efforts in this field will be needed to achieve standardization of the measurement method and to establish cutoff values valid for European population. In the light of comparison with other presented studies, we were also able to justify the importance of the NPV of CRP levels (3. and 5. POD) on the prediction of AL development and to confirm comparable cutoff values using ROC analysis.

Ethical approval

This study was approved by Ethics Committee of the Hradec Kralove University Hospital under the reference number 202109 P06.

Declaration of patient consent

The authors certify that they have obtained all appropriate patient consent.

Financial support and sponsorship

The work was supported by project of the Ministry of Education Youth and Sports of Czech republic (Specifický výzkum č. SV/ FVZ202007) and by the Ministry of Defence of the Czech Republic – DRO of the University of Defence, Faculty of

Military Health Sciences Hradec Kralove, Czech Republic – Clinical disciplines II (DZRO-FVZ22-KLINIKA II).

Conflicts of interest

There are no conflicts of interest.

Use of artificial intelligence (AI)-assisted technology for manuscript preparation

The authors confirm that there was no use of artificial intelligence (AI)-assisted technology for assisting in the writing or editing of the manuscript and no images were manipulated using AI.

REFERENCES

1. Sung H, Ferlay J, Siegel RL, Laversanne M, Soerjomataram I, Jemal A, *et al.* Global cancer statistics 2020: GLOBOCAN estimates of incidence and mortality worldwide for 36 cancers in 185 countries. *CA Cancer J Clin* 2021;71:209-49.
2. Araghi M, Soerjomataram I, Bardot A, Ferlay J, Cabasag CJ, Morrison DS, *et al.* Changes in colorectal cancer incidence in seven high-income countries: A population-based study. *Lancet Gastroenterol Hepatol* 2019;4:511-8.
3. Vuik FE, Nieuwenburg SA, Bardou M, Lansdorp-Vogelaar I, Dinis-Ribeiro M, Bento MJ, *et al.* Increasing incidence of colorectal cancer in young adults in Europe over the last 25 years. *Gut* 2019;68:1820-6.
4. Chai VW, Chia M, Cocco A, Bhamidipaty M, D'Souza B. Sarcopenia is a strong predictive factor of clinical and oncological outcomes following curative colorectal cancer resection. *ANZ J Surg* 2021;91:E292-7.
5. Zhuang CL, Huang DD, Pang WY, Zhou CJ, Wang SL, Lou N, *et al.* Sarcopenia is an independent predictor of severe postoperative complications and long-term survival after radical gastrectomy for gastric cancer: Analysis from a large-scale cohort. *Medicine (Baltimore)* 2016;95:e3164.
6. Trejo-Avila M, Bozada-Gutierrez K, Valenzuela-Salazar C, Herrera-Esquivel J, Moreno-Portillo M. Sarcopenia predicts worse postoperative outcomes and decreased survival rates in patients with colorectal cancer: A systematic review and meta-analysis. *Int J Colorectal Dis* 2021;36:1077-96.
7. Herrod PJ, Boyd-Carson H, Doleman B, Trotter J, Schlichtemeier S, Sathanapally G, *et al.* Quick and simple; psoas density measurement is an independent predictor of anastomotic leak and other complications after colorectal resection. *Tech Coloproctol* 2019;23:129-34.
8. Berkel AE, Klaase JM, De Graaff F, Bruske-Keizer MG, Bongers BC, Van Meeteren NL. Patient's Skeletal muscle radiation attenuation and sarcopenic obesity are associated with postoperative morbidity after neoadjuvant chemoradiation and resection for rectal cancer. *Dig Surg* 2019;36:376-83.
9. Cruz-Jentoft AJ, Baeyens JP, Bauer JM, Boirie Y, Cederholm T, Landi F, *et al.* Sarcopenia: European consensus on definition and diagnosis: Report of the European working group on sarcopenia in older people. *Age Ageing* 2010;39:412-23.

10. Cruz-Jentoft AJ, Bahat G, Bauer J, Boirie Y, Bruyère O, Cederholm T, *et al.* Sarcopenia: Revised European consensus on definition and diagnosis. *Age Ageing* 2019;48:16-31.
11. Van Vugt JL, Coebergh van den Braak RR, Lalmahomed ZS, Vrijland WW, Dekker JW, Zimmerman DD, *et al.* Impact of low skeletal muscle mass and density on short and long-term outcome after resection of stage I-III colorectal cancer. *Eur J Surg Oncol* 2018;44:1354-60.
12. Wu XL, Shen J, Danzeng CD, Xu XS, Cao ZX, Jiang W. CT psoas calculations on the prognosis prediction of emergency laparotomy: A single-center, retrospective cohort study in Eastern Asian population. *World J Emerg Surg* 2022;17:31.
13. Miao SL, Ye XN, Lin TT, Qiu YH, Huang JY, Zheng XW, *et al.* The psoas muscle density as a predictor of postoperative complications and 30-day mortality for acute mesenteric ischemia patients. *Abdom Radiol (NY)* 2022;47:1644-53.
14. Shen W, Punyanitya M, Wang Z, Gallagher D, St-Onge MP, Albu J, *et al.* Total body skeletal muscle and adipose tissue volumes: Estimation from a single abdominal cross-sectional image. *J Appl Physiol* (1985) 2004;97:2333-8.
15. Mourtzakis M, Prado CM, Liefers JR, Reiman T, McCargar LJ, Baracos VE. A practical and precise approach to quantification of body composition in cancer patients using computed tomography images acquired during routine care. *Appl Physiol Nutr Metab* 2008;33:997-1006.
16. Rutten IJ, Ubachs J, Kruitwagen R, Beets-Tan RG, Olde Damink SW, Van Gorp T. Psoas muscle area is not representative of total skeletal muscle area in the assessment of sarcopenia in ovarian cancer. *J Cachexia Sarcopenia Muscle* 2017;8:630-8.
17. Benedek Z, Todor-Boer S, Kocsis L, Bauer O, Suciú N, Coroş MF. Psoas muscle index defined by computer tomography predicts the presence of postoperative complications in colorectal cancer surgery. *Medicina (Kaunas)* 2021;57:472.
18. Pekarova A, Pekar M, Soltes M, Havrlentová L, Chovancová T. Psoas density-an optimal sarcopaenic indicator associated with postoperative complications after colorectal resection for cancer? *Wideochir Inne Tech Maloinwazyjne* 2021;16:91-7.
19. Cuijpers AC, Bongers BC, Heldens A, Bours MJ, Van Meeteren NL, Stassen LP, *et al.* Aerobic fitness and muscle density play a vital role in postoperative complications in colorectal cancer surgery. *J Surg Oncol* 2022;125:1013-23.
20. Xiao YZ, Wen XT, Ying YY, Zhang XY, Li LY, Wang ZC, *et al.* The psoas muscle density as a predictor of postoperative complications in elderly patients undergoing rectal cancer resection. *Front Oncol* 2023;13:1189324.
21. Dindo D, Demartines N, Clavien PA. Classification of surgical complications: A new proposal with evaluation in a cohort of 6336 patients and results of a survey. *Ann Surg* 2004;240:205-13.
22. Clavien PA, Barkun J, De Oliveira ML, Vauthey JN, Dindo D, Schulick RD, *et al.* The Clavien-Dindo classification of surgical complications: Five-year experience. *Ann Surg* 2009;250:187-96.
23. Rahbari NN, Weitz J, Hohenberger W, Moran B, Ulrich A, Holm T, *et al.* Definition and grading of anastomotic leakage following anterior resection of the rectum: A proposal by the International Study Group of rectal cancer. *Surgery* 2010;147:339-51.
24. Matthiessen P, Hallbook O, Rutegard J, Simert G, Sjødahl R. Defunctioning stoma reduces symptomatic anastomotic leakage after low anterior resection of the rectum for cancer: A randomized multicenter trial. *Ann Surg* 2007;246:207-14.
25. Kostov G, Dimov R, Doykov M. Diverting ileostomy in low anterior resection: Single center retrospective analysis. *Pol Przegl Chir* 2022;94:26-32.
26. Hoek VT, Sparreboom CL, Wolthuis AM, Menon AG, Kleinrensink GJ, D'Hoore A, *et al.* C-reactive protein (CRP) trajectory as a predictor of anastomotic leakage after rectal cancer resection: A multicentre cohort study. *Colorectal Dis* 2022;24:220-7.
27. Stephensen BD, Reid F, Shaikh S, Carroll R, Smith SR, Pockney P, *et al.* C-reactive protein trajectory to predict colorectal anastomotic leak: PREDICT Study. *Br J Surg* 2020;107:1832-7.
28. Singh PP, Zeng IS, Srinivasa S, Lemanu DP, Connolly AB, Hill AG, *et al.* Systematic review and meta-analysis of use of serum C-reactive protein levels to predict anastomotic leak after colorectal surgery. *Br J Surg* 2014;101:339-46.
29. Gaillard M, Tranchart H, Maitre S, Perlemuter G, Lainas P, Dagher I. Preoperative detection of sarcopenic obesity helps to predict the occurrence of gastric leak after sleeve gastrectomy. *Obes Surg* 2018;28:2379-85.
30. Miyamoto Y, Baba Y, Sakamoto Y, Ohuchi M, Tokunaga R, Kurashige J, *et al.* Sarcopenia is a negative prognostic factor after curative resection of colorectal cancer. *Ann Surg Oncol* 2015;22:2663-8.
31. Nakanishi R, Oki E, Sasaki S, Hirose K, Jogo T, Edahiro K, *et al.* Sarcopenia is an independent predictor of complications after colorectal cancer surgery. *Surg Today* 2018;48:151-7.
32. Richards SJ, Senadeera SC, Frizelle FA. Sarcopenia, as assessed by psoas cross-sectional area, is predictive of adverse postoperative outcomes in patients undergoing colorectal cancer surgery. *Dis Colon Rectum* 2020;63:807-15.
33. Jones KI, Doleman B, Scott S, Lund JN, Williams JP. Simple psoas cross-sectional area measurement is a quick and easy method to assess sarcopenia and predicts major surgical complications. *Colorectal Dis* 2015;17:O20-6.
34. Blackwell JE, Herrod PJ, Doleman B, Boyd-Carson H, Dolan D, Wheldon L, *et al.* CT-derived measures of muscle quantity and quality predict poorer outcomes from elective colorectal surgery: A UK multicentre retrospective cohort study. *Tech Coloproctol* 2023;27:1091-8.
35. Rollins KE, Javanmard-Emamghissi H, Awwad A, Macdonald IA, Fearon KC, Lobo DN, *et al.* Body composition measurement using computed tomography: Does the phase of the scan matter? *Nutrition* 2017;41:37-44.
36. Van Vugt JL, Coebergh van den Braak RR, Schippers HJ, Veen KM, Levolger S, De Bruin RW, *et al.* Contrast-enhancement influences skeletal muscle density, but not skeletal muscle mass, measurements on computed tomography. *Clin Nutr* 2018;37:1707-14.
37. Rollins KE, Awwad A, Macdonald IA, Lobo DN. A comparison of two different software packages for analysis of body composition using computed tomography images. *Nutrition* 2019;57:92-96.
38. Van Vugt JL, Levolger S, Gharbharan A, Koek M, Niessen WJ,

- Burger JW, *et al.* A comparative study of software programmes for cross-sectional skeletal muscle and adipose tissue measurements on abdominal computed tomography scans of rectal cancer patients. *J Cachexia Sarcopenia Muscle* 2017;8:285-97.
39. Teigen LM, Kuchnia AJ, Nagel E, Deuth C, Vock DM, Mulasi U, *et al.* Impact of Software selection and imagej tutorial corrigendum on skeletal muscle measures at the third lumbar vertebra on computed tomography scans in clinical populations. *JPEN J Parenter Enteral Nutr* 2018;42:933-41.
 40. Simpson G, Manu N, Magee C, Wilson J, Moug S, Vimalachandran D. Measuring sarcopenia on pre-operative CT in older adults undergoing emergency laparotomy: A comparison of three different calculations. *Int J Colorectal Dis* 2020;35:1095-102.
 41. Simpson G, Wilson J, Vimalachandran D, McNicol F, Magee C. Sarcopenia estimation using psoas major enhances P-POSSUM mortality prediction in older patients undergoing emergency laparotomy: Cross-sectional study. *Eur J Trauma Emerg Surg* 2022;48:2003-12.
 42. Rollins KE, Gopinath A, Awwad A, Macdonald IA, Lobo DN. Computed tomography-based psoas skeletal muscle area and radiodensity are poor sentinels for whole L3 skeletal muscle values. *Clin Nutr* 2020;39:2227-32.
 43. Looijaard S, Meskers CG, Slee-Valentijn MS, Bouman DE, Wymenga AN, Klaase JM, *et al.* Computed tomography-based body composition is not consistently associated with outcome in older patients with colorectal cancer. *Oncologist* 2020;25:e492-501.
 44. Hamaguchi Y, Kaido T, Okumura S, Kobayashi A, Hammad A, Tamai Y, *et al.* Proposal for new diagnostic criteria for low skeletal muscle mass based on computed tomography imaging in Asian adults. *Nutrition* 2016;32:1200-5.
 45. Lawlor MA, Oliveto JM, Geske JA, Khandalavala BN. Computerized tomography derived psoas muscle indices in a healthy young population in the United States. *J Frailty Sarcopenia Falls* 2022;7:38-46.
 46. De Marco D, Mamane S, Choo W, Mullie L, Xue X, Afilalo M, *et al.* Muscle area and density assessed by abdominal computed tomography in healthy adults: Effect of normal aging and derivation of reference values. *J Nutr Health Aging* 2022;26:243-6.
 47. Abbass T, Tsz Ho YT, Horgan PG, Dolan RD, McMillan DC. The relationship between computed tomography derived skeletal muscle index, psoas muscle index and clinical outcomes in patients with operable colorectal cancer. *Clin Nutr ESPEN* 2020;39:104-13.
 48. Bahat G, Turkmen BO, Aliyev S, Catikkas NM, Bakir B, Karan MA, *et al.* Cut-off values of skeletal muscle index and psoas muscle index at L3 vertebra level by computerized tomography to assess low muscle mass. *Clin Nutr* 2021;40:4360-5.
 49. Martin L, Birdsell L, Macdonald N, Reiman T, Clandinin MT, McCargar LJ, *et al.* Cancer cachexia in the age of obesity: Skeletal muscle depletion is a powerful prognostic factor, independent of body mass index. *J Clin Oncol* 2013;31:1539-47.
 50. Malietzis G, Currie AC, Athanasiou T, Johns N, Anyamene N, Glynne-Jones R, *et al.* Influence of body composition profile on outcomes following colorectal cancer surgery. *Br J Surg* 2016;103:572-80.
 51. McSorley ST, Black DH, Horgan PG, McMillan DC. The relationship between tumour stage, systemic inflammation, body composition and survival in patients with colorectal cancer. *Clin Nutr* 2018;37:1279-85.
 52. Sueda T, Takahasi H, Nishimura J, Hata T, Matsuda C, Mizushima T, *et al.* Impact of low muscularity and myosteatosis on long-term outcome after curative colorectal cancer surgery: A propensity score-matched analysis. *Dis Colon Rectum* 2018;61:364-74.
 53. Tamas K, Walenkamp AM, De Vries EG, Van Vugt MA, Beets-Tan RG, Van Etten B, *et al.* Rectal and colon cancer: Not just a different anatomic site. *Cancer Treat Rev* 2015;41:671-9.
 54. Kawada K, Sakai Y. Preoperative, intraoperative and postoperative risk factors for anastomotic leakage after laparoscopic low anterior resection with double stapling technique anastomosis. *World J Gastroenterol* 2016;22:5718-27.
 55. Parthasarathy M, Greensmith M, Bowers D, Groot-Wassink T. Risk factors for anastomotic leakage after colorectal resection: A retrospective analysis of 17 518 patients. *Colorectal Dis* 2017;19:288-98.
 56. Sciuto A, Merola G, De Palma GD, Sodo M, Pirozzi F, Bracale UM, *et al.* Predictive factors for anastomotic leakage after laparoscopic colorectal surgery. *World J Gastroenterol* 2018;24:2247-60.

How to cite this article: Kotek J, Lochman P, Hulek M, Sirovy M, Merkl T, Cermakova E, *et al.* Does computed tomography-derived volumetry and densitometry of psoas muscle really correlate with complications in rectal cancer patients after elective surgery? *J Clin Imaging Sci.* 2024;14:26. doi: 10.25259/JCIS_43_2024